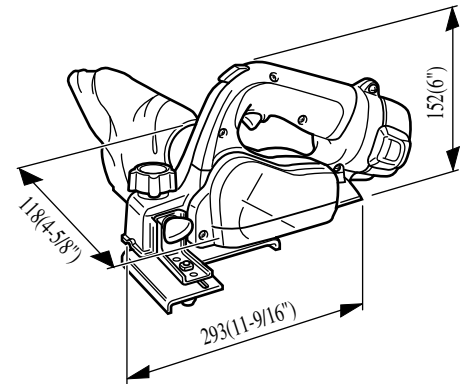


For Models ▶ 1050D

Description ▶ 12V Cordless

CONCEPTION AND MAIN APPLICATIONS

	Battery	Fast charger	Plastic case
1050DA	1222	None	None
1050DRA	1222	DC1409	Equipped
1050DWA	1222	DC1411	Equipped



► Specifications

No load speed	9,000R/min
Driving shank (LxWxH)	Plane blade width 50mm [1-31/32"]
Max. planing width	50mm[1-31/32"]
Max. planing depth	0.5mm[0.02"]
Shiplapping Max. depth	15mm[9/16"]

► Standard equipment

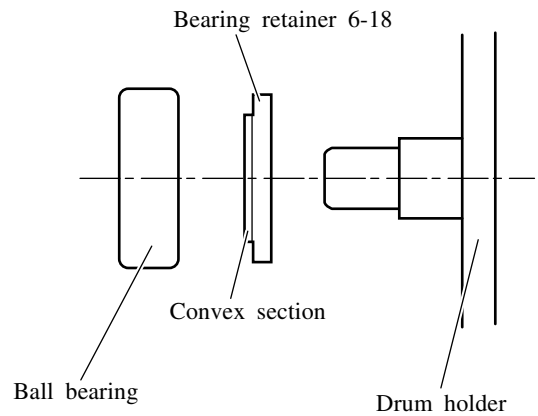
Dust bag assembly...1 pc.
 Guide Rule...1 pc.
 Battery cover...1pc.
 Hex. Wrench 4 ...1pc.
 Set plate...1 pc.

► Optional accesories

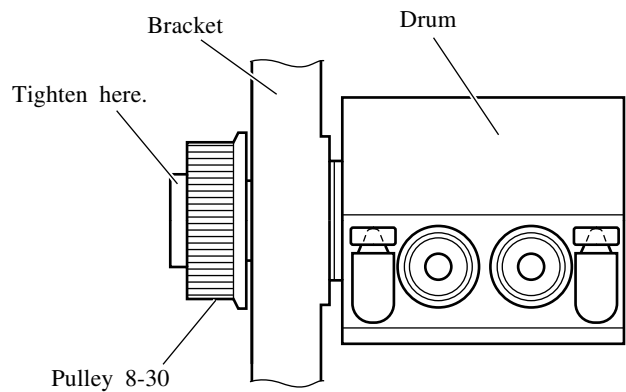
Plane blade
 Battery 1200, Battery 1202, Battery 1222, Battery 1220(for export only), Battery 1233,
 Battery 1202A, Fast charger DC1411, Fast charger DC1409(for export only), Fast
 charger DC1809(for domestic only), Charger DC1801(for export only), Fast charger
 DC1412(for North America and Europe only)

► Repair

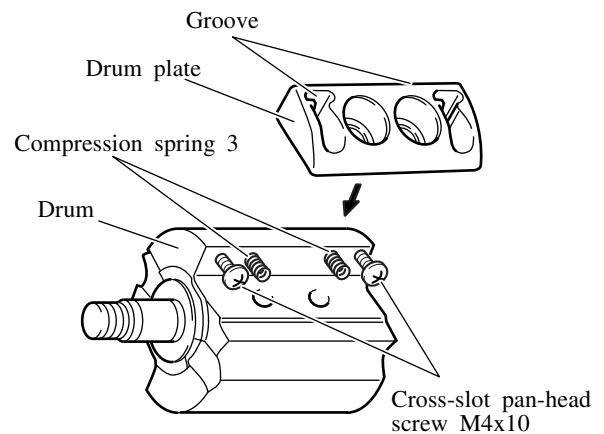
- (1) Mount bearing retainer 6-18 to drum holder together with ball bearing so that the convex part of the retainer should face ball bearing.



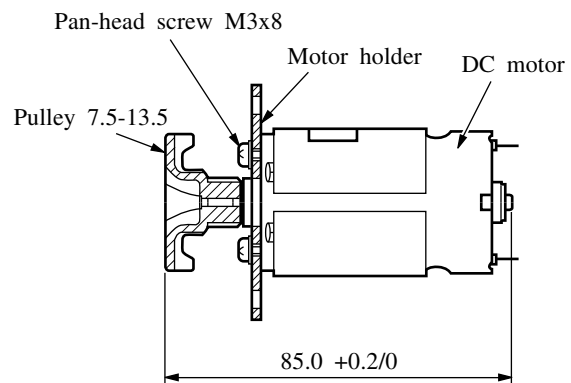
- (2) Tighten pulley 8-30 securely by using a wrench 17 or adjustable wrench, etc. as the motor has a brake function. (Note) Tightening torque is around 2.0Nm or over.



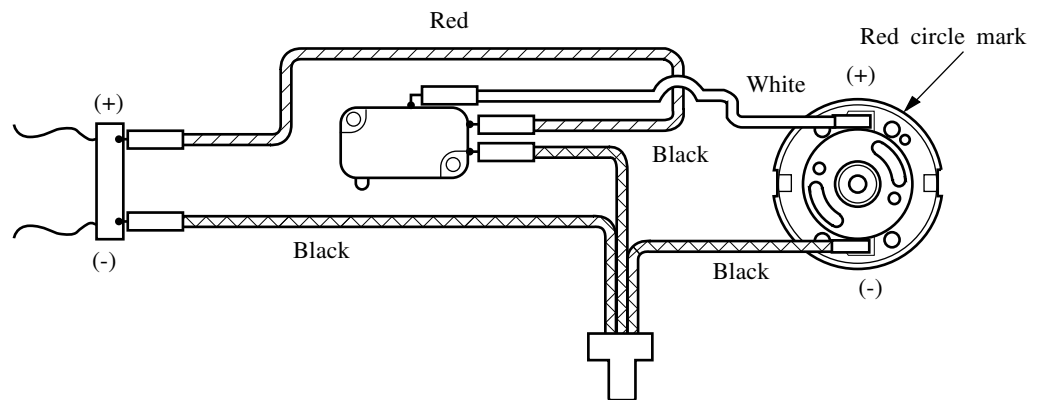
- (3) Insert compression springs 3 into drum holes before mounting a drum plate to the drum. For insertion, thread cross-slot pan-head screws (M4x10) about one turn and attach the drum plate so that the screw heads will set into the grooves on the drum plate.



- (4) Press pulley (7.5 to 13.5) into DC motor with the dimension as shown on the right figure.

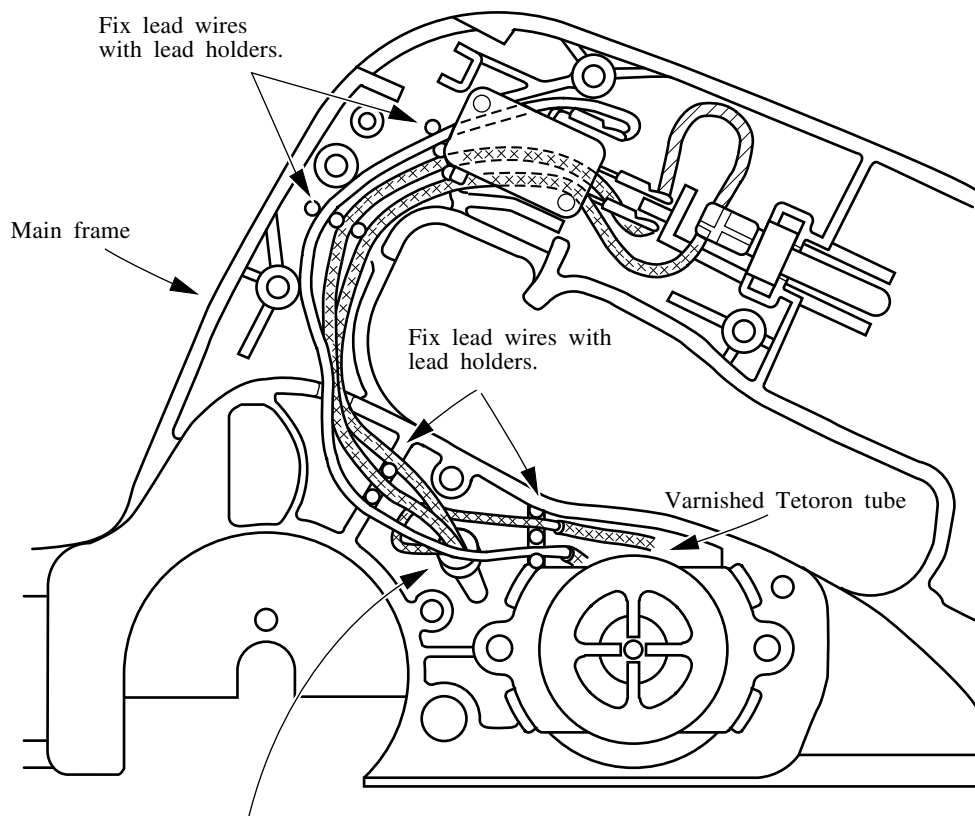


► Wiring diagram



► Connection diagram

Arrange lead wires in the main frame as shown below.



Treat connector end as shown in the figure.